



Model CB-RSPA32S-01
RS-232/422/485 – Bluetooth Adapter
Long Range – NEMA Rated

Bluetooth Enable any Serial Device

CB-RSPA32S-01 allows you to replace the serial cable with wireless Bluetooth technology. Its robust design makes it perfect for industrial applications. Bluetooth is license free.

Use the Serial Port Adapter and connect it to the RS-232/RS-422/RS-485 port of your device and you have a wireless connection. Now you can connect your PC, laptop, PDA or any other serial device wirelessly to your device up to 100 meter distance. The Serial Port Adapter supports baud rates from 300 bps up to 920 kbps.

Serial and other settings are configured using PC Configuration Wizard and will be stored in non volatile memory. AT commands may also be used to configure and control the Serial Port Adapter from the connected device.

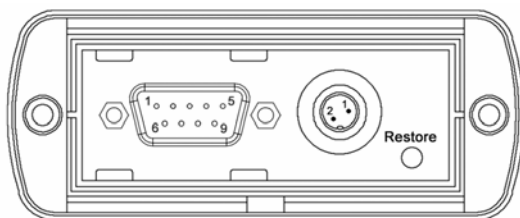
Once in operation the Serial Port Adapter works transparently and simply replaces RS-232/RS-422/RS-485 cables. No software has to be installed in the device. The CB-RSPA32S is cased in metal for wall mount and is NEMA rated.

The RSPA32s can be used as master in a multidrop network using maximum 7 slaves.

The document *Serial Port Adapter Application Scenarios* will show a number of different use cases for the product.

Interface – RS-232

Connector:	DB-9 Male
Signals:	Pin 1 – Not used
	Pin 2 – RD (Receive Data, in)
	Pin 3 – TD (Transmit Data, out)
	Pin 4 – DTR (Data Terminal Ready, out)
	Pin 5 – GND (Ground)
	Pin 6 – DSR (Data Set Ready, in)
	Pin 7 – RTS (Request To Send, out)
	Pin 8 – CTS (Clear To Send, in)
	Pin 9 – Not used
Data Bits:	5, 6, 7 or 8
Parity:	None, Odd or Even
Stop Bits:	1 or 2
Data Rates:	300 bps – 920 kbps

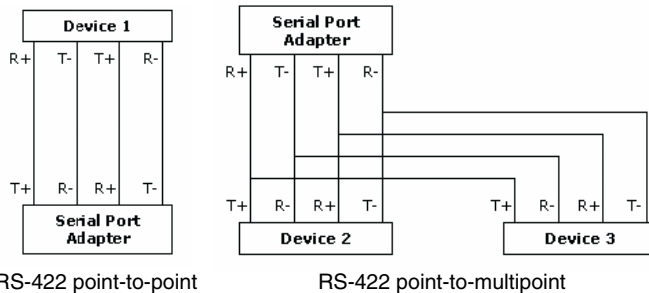


International Headquarters: 707 Dayton Road PO Box 1040 Ottawa, IL 61350 USA
 815-433-5100 Fax 433-5104 www.bb-elec.com orders@bb-elec.com support@bb-elec.com

European Headquarters: Westlink Commercial Park Oranmore Co. Galway Ireland
 +353 91 792444 Fax +353 91 792445 www.bb-europe.com orders@bb-elec.com support@bb-europe.com

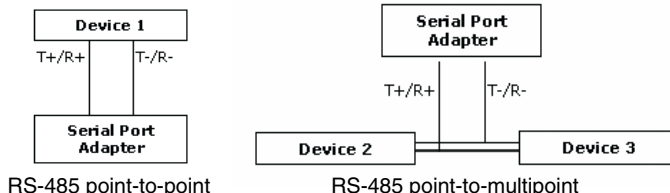
Interface – RS-422 & RS-485

Signals: Pin 1 – R- (Receive, in)
 Pin 2 – T- (Transmit, out)
 Pin 6 – R+ (Receive, in)
 Pin 8 – T+ (Transmit, out)



Please Note:

For RS-485 (2 wire) T+ and R+ and has to be connected externally.
 T- and R- has to be connected externally.



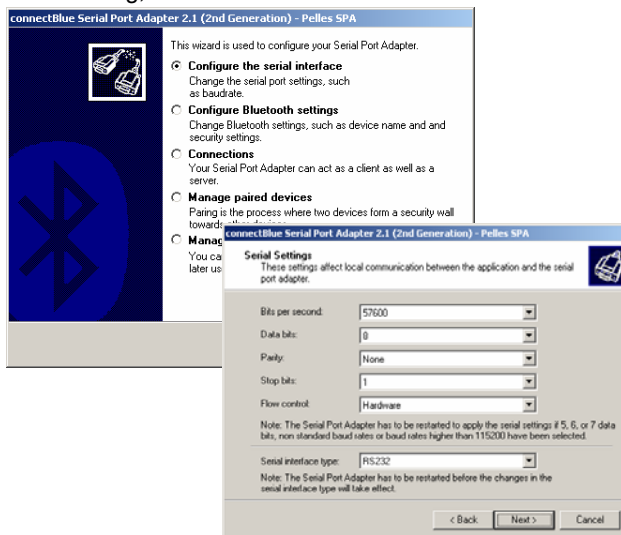
Power & Environment

Power Requirements: 8-30 VDC (power supply included)
 Operating Temperature: -20 to + 75 C°
 Storage Temperature: -40 to + 85 C°
 Humidity: RH 5-90% noncondensing
 Shock and Vibration: IEC 61131-2
 Approvals: CE, FCC
 Dimensions: 3.0 x 3.3 x 1.4 in (75.5 x 84.6 x 34.6 mm)

Configuration

The Serial Port Adapter can be configured in different ways. Included with the product is the PC Configuration Wizard used to configure Serial Settings, Bluetooth Settings, Connection Handling, etc.

- Serial Settings: Baud Rate
 Number of Data Bits
 Parity
- Bluetooth Settings: Number of Stop Bits
 Device Name
 Security Setting
 Operation Mode
- Bluetooth Connections: Point-to-Point / Multidrop
 Server Operation Mode
 Client Operation Mode
 Server Device Selection
 Connect Scheme Selection



Deliverables

- CB-RSPA32s unit
- Power Adapter
- Stub Antenna
- RS-232 Cable
- CD – Configuration Wizard & Documentation
- Release Notes

Ordering Information

CB-RSPA32S-01 RS-232/422/485 Bluetooth Adapter, USA power supply
 CB-RSPA32S-01-UK RS-232/422/485 Bluetooth Adapter, UK power supply
 CB-RSPA32S-01-EU..... RS-232/422/485 Bluetooth Adapter, EU power supply



International Headquarters: 707 Dayton Road PO Box 1040 Ottawa, IL 61350 USA
 815-433-5100 Fax 433-5104 www.bb-elec.com orders@bb-elec.com support@bb-elec.com

European Headquarters: Westlink Commercial Park Oranmore Co. Galway Ireland
 +353 91 792444 Fax +353 91 792445 www.bb-europe.com orders@bb-elec.com support@bb-europe.com