



Model CB-SPA12i-01 10m Range
Model CB-SPA32i-01 100m Range

RS-232 to Bluetooth Serial Port Adapter

Short Range Internal Antenna

Bluetooth Enable Any Serial Device

Now you can connect your PC, laptop, PDA or any other device wirelessly to another device up to 10 meters away with Model CB-SPA12i-01, or up to 100 meters away with Model CB-SPA32i-01.

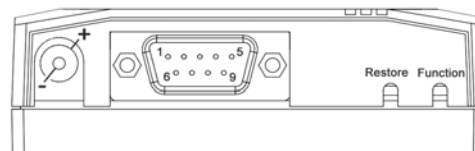
The Serial Port Adapter supports baud rates from 300 to 920kbps. Serial and other settings are configured using PC Configuration Wizard and stored in non-volatile memory. AT commands from the connected device may also be used to configure and control the Serial Port Adapter. No software needs to be installed in the connected device. Once in operation, the Serial Port Adapter is completely transparent and simply replaces RS-232 cables.

Bluetooth is license free. Robust design makes it perfect for industrial applications. A DIN Rail mount kit option is available. Compact molded case is 2.5 x 3.1 x 1.0 in (63 x 80 x 26cm). 5VDC power is required. A 110 VAC power supply is included.

The CB-SPAs can be used as a master in a multidrop network using a maximum of 3 slaves for model CB-SPA12i-01 or 7 slaves for model CB-SPA32i-01. The document *Serial Port Adapter Application Scenarios* will show a number of different use cases for the product.

Interface

Connector:	DB-9 Male
Signals:	RS-232
	Pin 1 – Not used
	Pin 2 – RD (Receive Data, in)
	Pin 3 – TD (Transmit Data, out)
	Pin 4 – DTR (Data Terminal Ready, out)
	Pin 5 – GND (Ground)
	Pin 6 – DSR (Data Set Ready, in)
	Pin 7 – RTS (Request To Send, out)
	Pin 8 – CTS (Clear To Send, in)
	Pin 9 – Not used
Data Bits:	5, 6, 7 or 8
Parity:	None, Odd or Even
Stop Bits:	1 or 2
Data Rates:	300 bps – 920 kbps



Power & Environment

Power Requirements:	5 VDC (power supply included)
Operating Temperature:	-20 to +75 C°
Storage Temperature:	-40 to +85 C°
Humidity:	RH 5-90% non-condensing
Shock and Vibration:	IEC 61131-2
Approvals:	CE, FCC
Dimensions:	2.5 x 3.1 x 1.0 in (63 x 80 x 26 cm)

B&B electronics
MANUFACTURING COMPANY

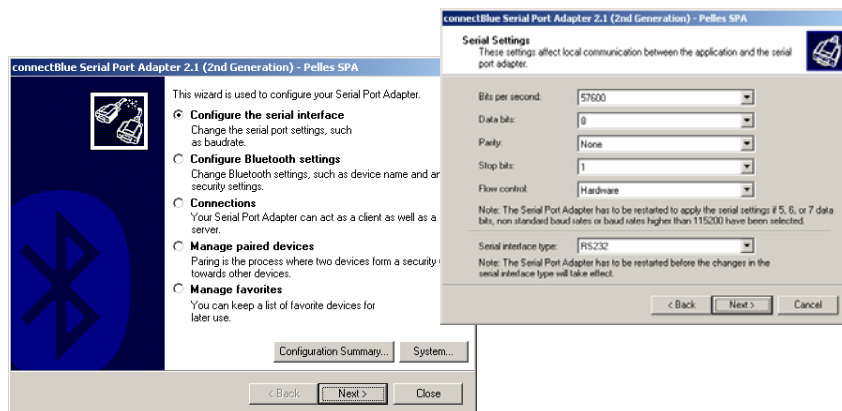
International Headquarters: 707 Dayton Road PO Box 1040 Ottawa, IL 61350 USA
815-433-5100 Fax 433-5104 www.bb-elec.com orders@bb-elec.com support@bb-elec.com

European Headquarters: Westlink Commercial Park Oranmore Co. Galway Ireland
+353 91 792444 Fax +353 91 792445 www.bb-europe.com orders@bb-elec.com support@bb-europe.com

Configuration

The Serial Port Adapter can be configured in different ways. Included with the product is the PC Configuration Wizard used to configure RS-232 Settings, Bluetooth Settings, Connection Handling, etc.

- RS-232 Settings: Baud Rate
 Number of Data Bits
 Parity
 Number of Stop Bits
- Bluetooth Settings: Device Name
 Security Setting
 Operation Mode
- Bluetooth Connections: Point-to-Point / Multidrop
 Server Operation Mode
 Client Operation Mode
 Server Device Selection
 Connect Scheme Selection



Ordering Information

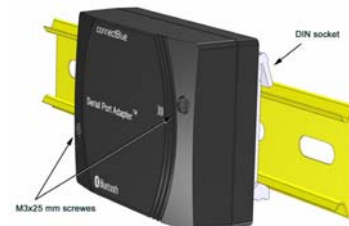
10m Range

- Model CB-SPA12i-01 10m Range, USA power supply
- Model CB-SPA12i-01-UK 10m Range, UK power supply
- Model CB-SPA12i-01-EU 10m Range, EU power supply

100m Range

- Model CB-SPA32i-01 100m Range, USA power supply
- Model CB-SPA32i-01-UK 100m Range, UK power supply
- Model CB-SPA32i-01-EU 100m Range, EU power supply

Each of the above units comes with:
 Power Adapter
 RS-232 Cable
 CD – Configuration Wizard & Documentation
 Release Notes



Additional Accessories Available

- CB-ACC-22 Din Rail Mounting Kit



International Headquarters: 707 Dayton Road PO Box 1040 Ottawa, IL 61350 USA
 815-433-5100 Fax 433-5104 www.bb-elec.com orders@bb-elec.com support@bb-elec.com

European Headquarters: Westlink Commercial Park Oranmore Co. Galway Ireland
 +353 91 792444 Fax +353 91 792445 www.bb-europe.com orders@bb-elec.com support@bb-europe.com