

Elinx™ EIR405-T

5 Port Gigabit Industrial Ethernet Switch

- ✓ 5 10/100/1000 Base-T Ethernet Ports
- ✓ 3000V EFT & 6000V ESD Protection
- ✓ Dual 12 to 48 VDC Power Inputs
- ✓ Wide Operating Temperature
- ✓ DIN or Panel Mount Options



The **EIR405-T** is a 5 Port Unmanaged Industrial Gigabit Ethernet Switch. Packed full of rugged features, this switch is perfect for your high speed industrial network.

High-Speed Transmissions: The EIR405-T includes a switch controller that automatically senses transmission speed (10/100/1000 Mbps). The RJ-45 interface also auto-detects MDI or MDI-X, eliminating the requirement for a crossover cable. Each port is buffered and supports store-and-forward protocol.

Dual Power Input: To reduce the risk of power failure, the EIR405-T provides two 12 to 48 VDC power inputs. If the power fails, the switch will automatically use the secondary power input. Also, if the power goes out the corresponding P1 or P2 LED will go out and the Fault LED will light. The contacts for the alarm output will also open.

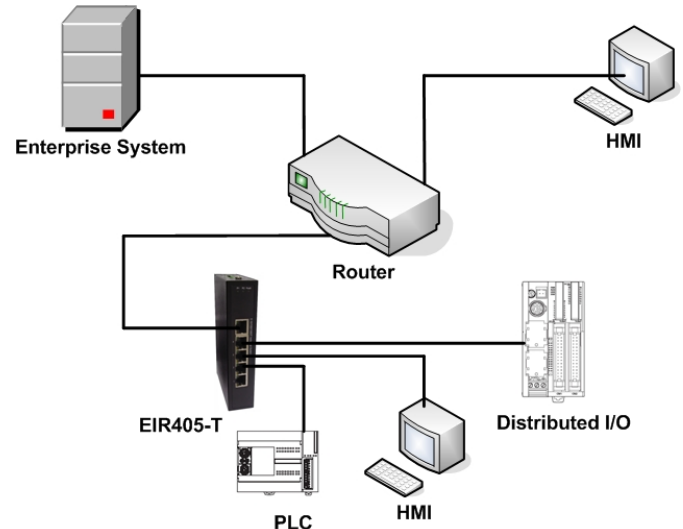
Flexible Mounting: The switch features a space saving IP30 metal enclosure that can be DIN or Panel mounted.

Transient Protection: The power line input on the EIR405-T offers protection from up to 3,000 V EFT. The Ethernet ports offer up to 6,000 V ESD protection. These features make the switch reliable and suitable for use in harsh electrical environments.

Wide Operating Temperature: With an operating temperature of -40 to 75°C (-40 to 167°F), this switch can be used in harsh industrial environments.

Easy Troubleshooting: There are two LED indicators for each port that display the link status and transmission speed. Three LED indicators for power (P1, P2 and Fault) show power status. These indicators allow you to quickly diagnose and correct problems and ensure your network remains reliable.

B&B Electronics' Elinx™ Brand Ethernet Switches are your number one choice for reliable performance in harsh industrial environments.



Ordering Information

Model Number	Description
EIR405-T	5 Port Industrial Gigabit Switch
Accessories	
MDR-60-24	24VDC, 2.5A DIN Mount Power Supply

Specifications

Regulatory	
Approvals	FCC, CE, UL
	UL File Number: E173795
Free Fall	IEC60068-2-32
Shock	IEC60068-2-27
Vibration	IEC60068-2-6

Specifications

IEEE Standards

IEEE 802.3	802.3. 10Base-T Ethernet
IEEE 802.3u	100Base-TX and 100Base-FX Fast Ethernet
IEEE 802.3ab	1000Base-T
IEEE 802.3x	Flow Control and Back Pressure

Network Specifications

Architecture	Back-plane (Switching Fabric): 10Gbps Throughput (Full-dup): 14.88Mpps@64bytes
Transfer Rate	14,880 pps Ethernet Port 148,800 pps Fast Ethernet Port

Buffer	136 Kbits
MAC Table	8K
Jumbo Frame	9Kbytes
Misc1	Broadcast Storm Filtering CSMA/CD

Interface

RJ-45 Ports	5 x 10/100/1000BaseT, Auto MDI/MDI-X
ESD Protection	6000V ESD Protection
LED Indicators	P1 (Power 1), P2 (Power 2), Fault (Power Fault), RJ-45 Ports have 2 LED's to indicate LINK and activity

Power

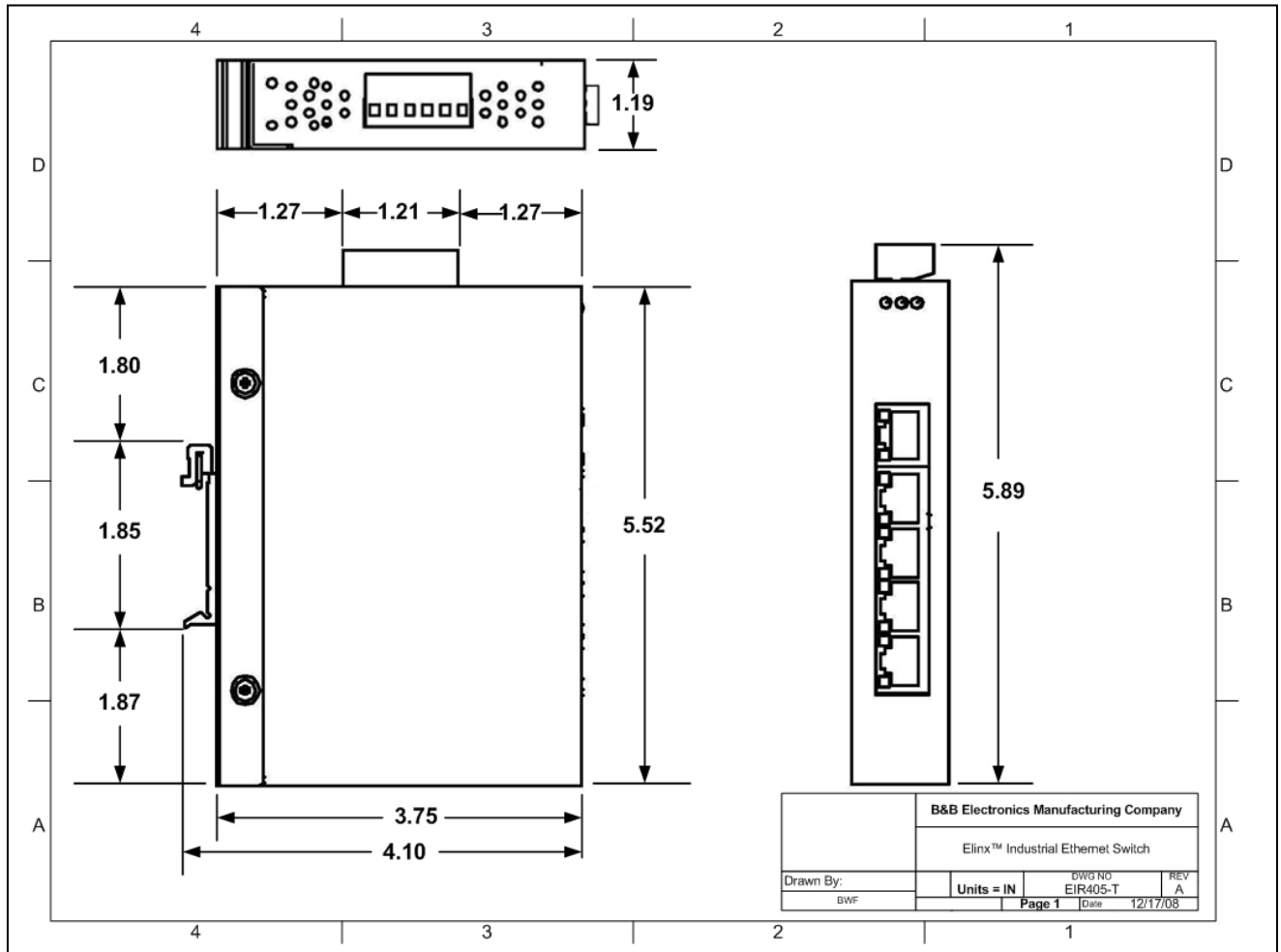
Input Voltage	Dual 12 to 48 VDC Inputs Reverse Polarity Protection
Power Connection	Removable Terminal Block
Wire Size	12 to 24 AWG
Power Use	4.6 Watts
Fault Output	1 Relay Output – Normally Closed
EFT Protection	3000 V EFT Protection

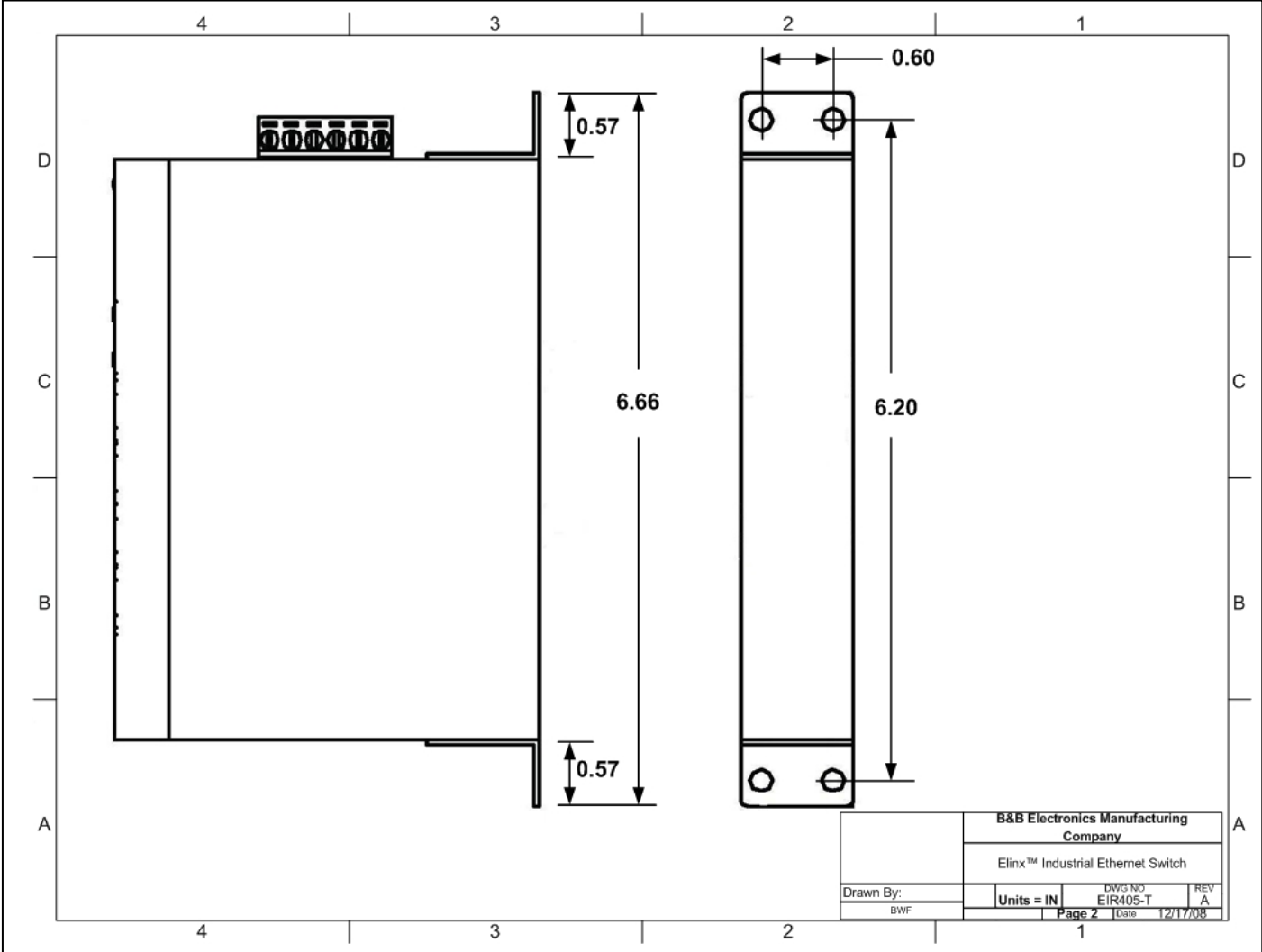
Environmental

Op. Temp	- 40 to 75°C (-40 to 167°F)
Storage Temp	- 40 to 85°C (-40 to 185°F)
Op. Humidity	0 to 95%

Mechanical

Enclosure	IP30 Metal Enclosure
Mounting	35mm DIN Rail or Panel Mount Attachments
Dimensions	1.2 x 3.8 x 5.5 in (3.0 x 9.7 x 14.0 cm)





B&B Electronics Manufacturing Company			
Elinx™ Industrial Ethernet Switch			
Drawn By:	Units = IN	DWG NO EIR405-T	REV A
BWF	Page 2	Date	12/17/08