

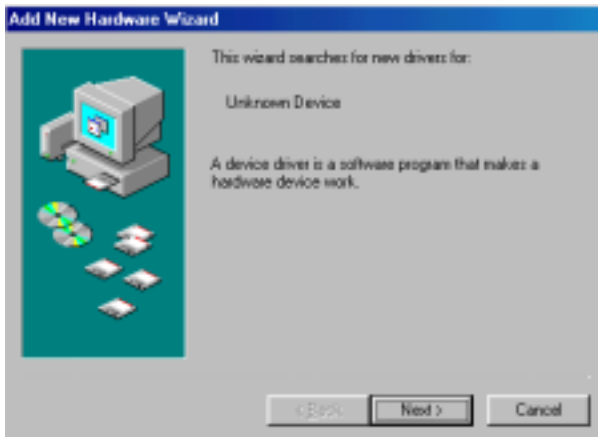
Connect an RS-422 Network to the USB Port Model US422TB

The **US422TB** is a USB (Universal Serial Bus) port to 2 channel RS-422 converter. This converter requires no PCI/ISA slots or IRQs. Simply plug the converter into an available USB port on your computer or hub. Windows will configure the converter as an additional COM port, compatible with your Windows applications.

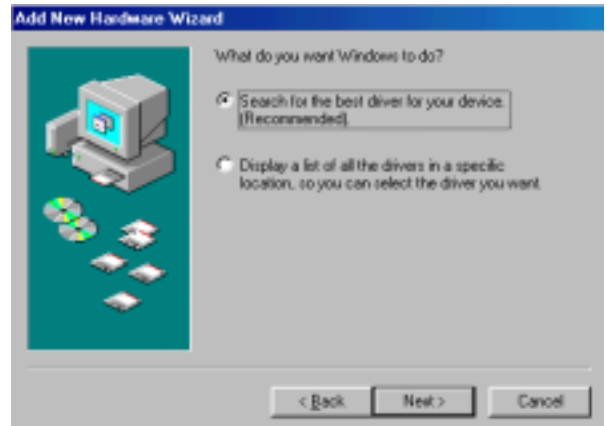


The RS-422 side is designed for a four-wire network. There are five terminal blocks making installation of this converter into an existing network easy. A pair of LEDs show when RS-422 data is being received or transmitted. The USB side permits quick setup. Just plug in the US422TB and Windows will install the drivers and set up the converter. The USB Bus supplies power so no separate power supply is needed.

Installation for Windows 98 (Installation for Windows 2000 may vary slightly from Windows 98 installation.)



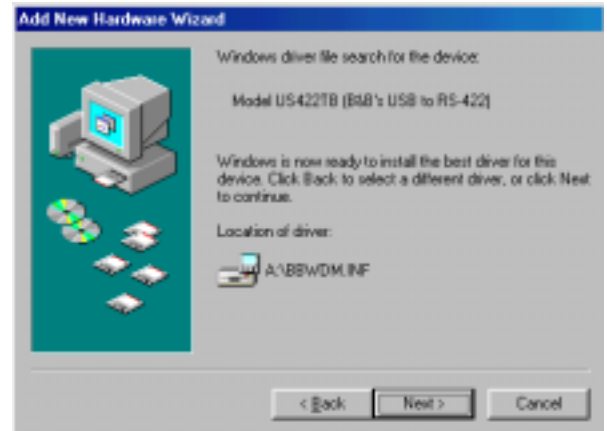
#1. Plug the US422TB into an available USB port on your computer or connected hub. The screen above appears, telling you that there is a new device plugged into the USB bus. Click on the **Next>** button.



#2. The screen above appears. Make sure *Search for the best driver for your device* is selected. Then select the **Next>** button.



#3. The screen above appears. Make sure *Floppy disk drives* is selected. Then select the **Next>** button.



#4. The screen above appears. Make sure *Model US422TB (B&B's USB to RS-422)* is listed as the device. Then select the **Next>** button.

© B&B Electronics February 2000

This product designed and manufactured in USA of domestic and imported parts by

B & B Electronics Mfg. Co.

707 Dayton Road - P.O. Box 1040 - Ottawa, IL 61350 USA

Phone: (815) 433-5100 - Fax: (815) 433-5105

Home Page: www.bb-elec.com

Sales e-mail: orders@bb-elec.com - Fax: (815) 433-5109

Technical Support e-mail: support@bb-elec.com - Fax: (815) 433-5104

B & B Electronics Ltd

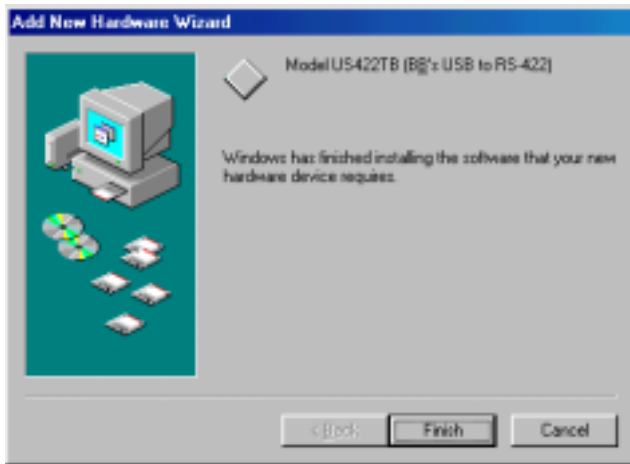
Westlink Commercial Park - Oranmore, Co. Galway - Ireland

Phone: +353 91 792444 - Fax: +353 91 792445

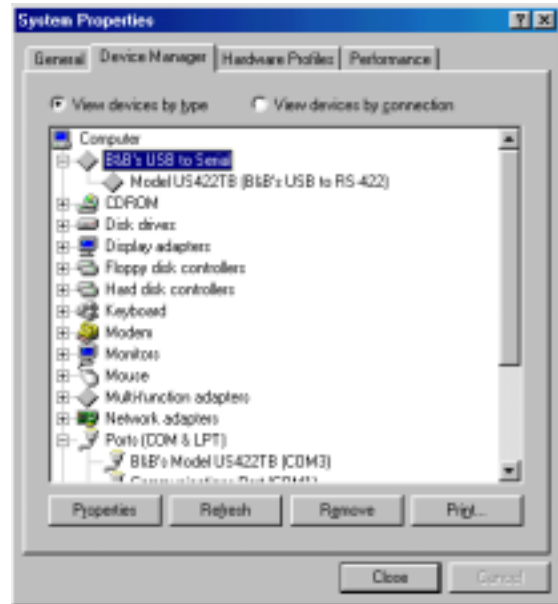
Home Page: www.bb-europe.com

Sales e-mail: orders@bb-europe.com

Technical Support e-mail: support@bb-europe.com



#5. The screen above will appear. Click the **Finish** button to complete the installation.



#6. The converter appears in the device manager under *B&B Serial Ports*, as *Model US422TB (B&B's USB to RS-422)*. The port appears under *Ports (COM & LPT)* as *B&B's Model US422TB (COMx)*. Where x is the COM number.

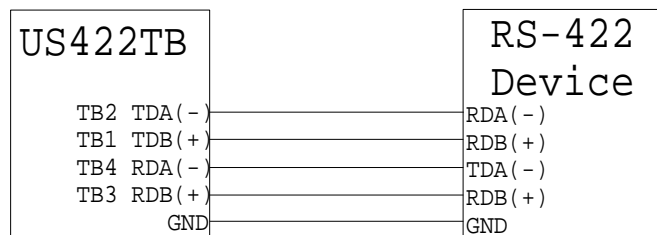
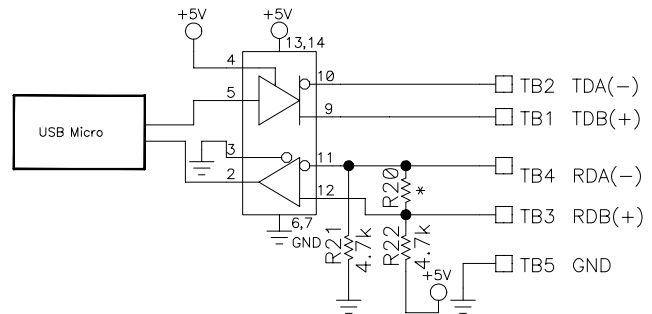
RS-422 Control

No special software is required to control the RS-422 transmit line driver. The driver and receiver are always enabled. The Receive lines have a 4.7K ohm pull-up (R22) resistor on RDB(+) and a pull-down (R21) resistor on RDA(-). The value of these resistors may need to be changed to a different value when termination (R20) is used in order to maintain the proper DC bias during the idle state. See B&B Electronics' RS-422/RS-485 Application Note (available at www.bb-elec.com or by mail) for more information on termination and DC biasing of an RS-485 network.

RS-422 Connection

Five terminal blocks are provided for RS-422 connections.

1. Connect TDA(-) from your RS-422 device into TB4 RDA(-).
2. Connect TDB(+) from your RS-422 device into TB3 RDB(+).
3. Connect RDA(-) from your RS-422 device into TB2 TDA(-).
4. Connect RDB(+) from your RS-422 device into TB1 TDB(+).
5. Connect the signal ground wire to TB5 GND of the US422TB.



Specifications

Dimensions: 3.0 x 0.9 x 1.7 in (7.7 x 2.3 x 4.3 cm)
 RS-422 Baud Rate: Up to 115.2 kbps
 USB Baud Rate: High speed device
 USB Power: Low power device (draws < 100mA)
 Operating System: Windows 98, Window2000
 Accessories: Driver disks on 3.5" media

© B&B Electronics February 2000

This product designed and manufactured in USA of domestic and imported parts by

B & B Electronics Mfg. Co.

707 Dayton Road - P.O. Box 1040 - Ottawa, IL 61350 USA
 Phone: (815) 433-5100 - Fax: (815) 433-5105
 Home Page: www.bb-elec.com

Sales e-mail: orders@bb-elec.com - Fax: (815) 433-5109
 Technical Support e-mail: support@bb-elec.com - Fax: (815) 433-5104

B & B Electronics Ltd

Westlink Commercial Park - Oranmore, Co. Galway - Ireland
 Phone: +353 91 792444 - Fax: +353 91 792445
 Home Page: www.bb-europe.com

Sales e-mail: orders@bb-europe.com
 Technical Support e-mail: support@bb-europe.com